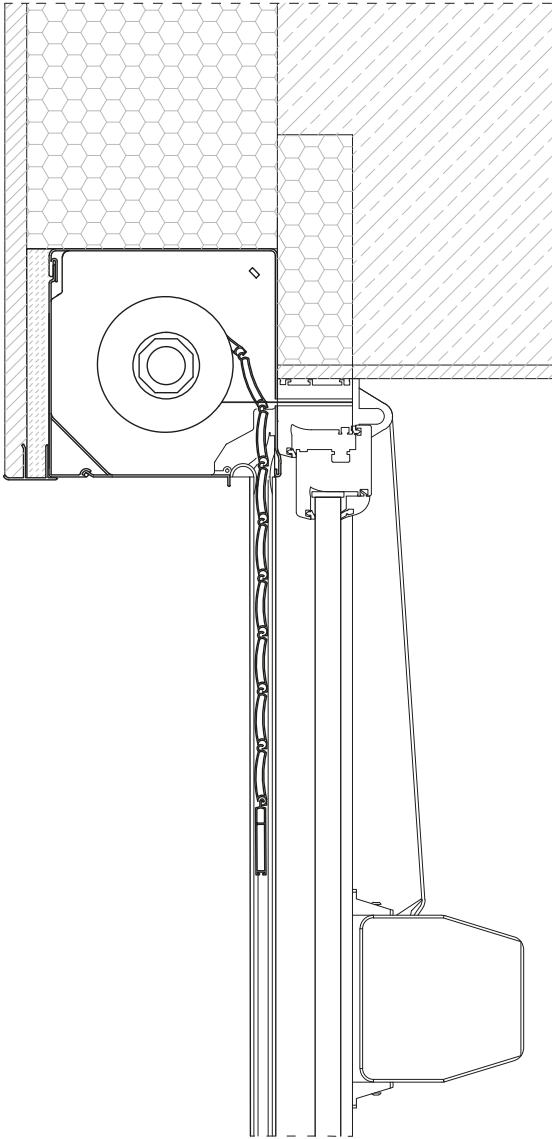
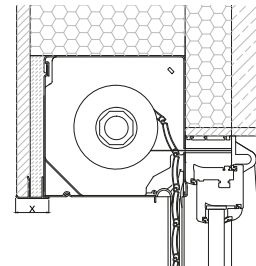


FLUSH MOUNTED SYSTEMS

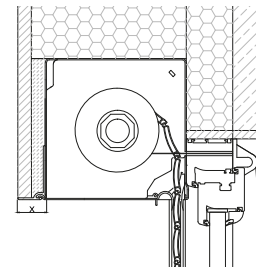


SP SYSTEM



X
30mm

SP-E SYSTEM

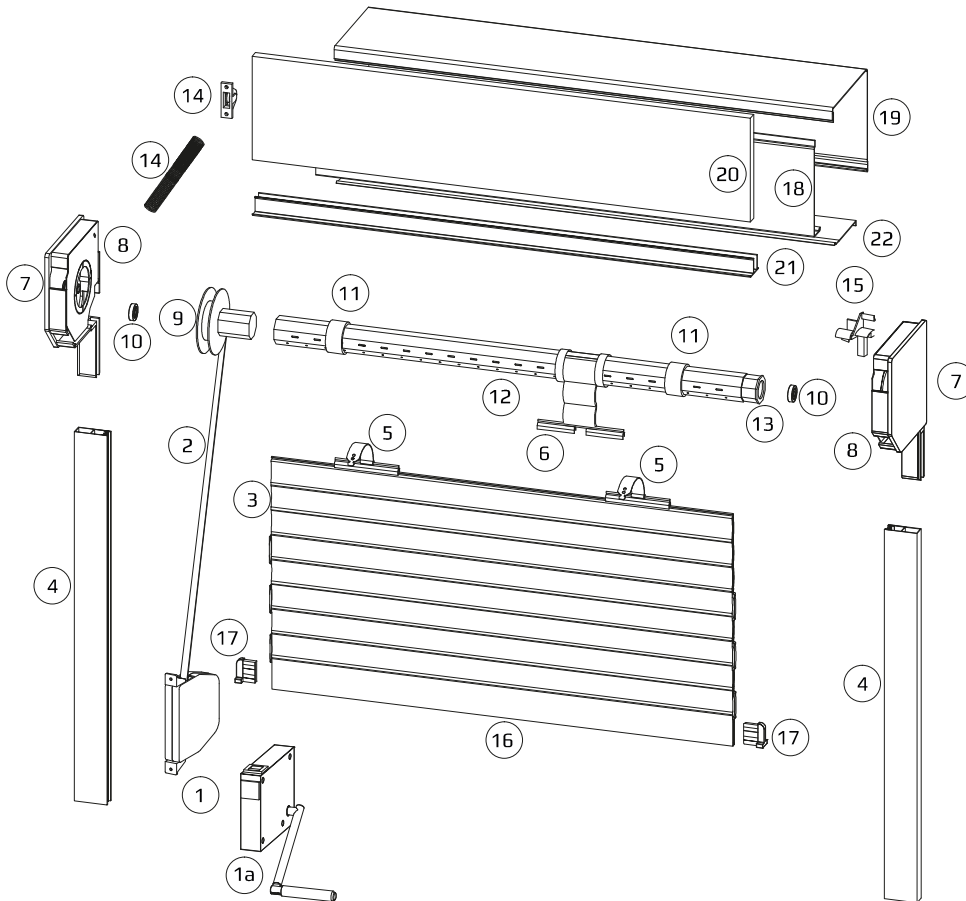


X
15mm | 30mm | 45mm | 105mm

max shutter height including box

box height	PA39			PA40			PA43		
	SW40+PZ/45	SW 50+PZ/56	SW 60+PZ/68	SW40+PZ/45	SW50+PA/56	SW60+PZ/68	SW40+PZ/45	SW50+PA/56	SW60+PZ/68
137 mm									
SP/SP-E	1600	1480	1210	1080	920	920	1410	1150	930
150 mm									
SP-E	1990	1840	1640	1400	1210	1000	1760	1800	1670
165 mm									
SP/SP-E	2470	2320	2120	1850	1650	1410	2500	2240	2110
180 mm									
SP/SP-E	3020	2790	2630	2340	2100	1860	2980	2800	2590
205 mm									
SP/SP-E	4210	3780	3780	2950	2630	2870	4020	4150	3630

SP FLUSH MOUNTED SYSTEM – COMPONENTS



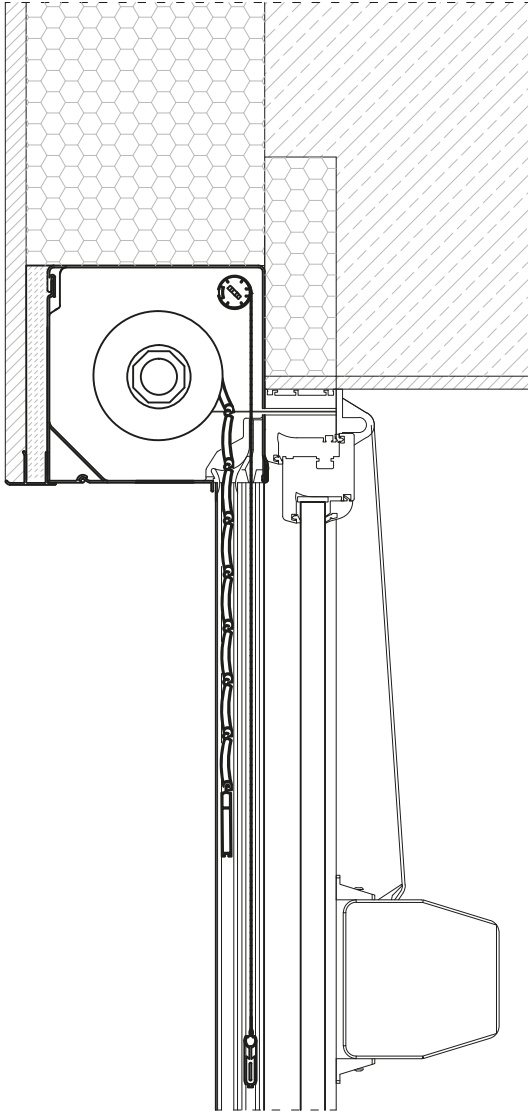
- 1 - coiler
- 1A - crank coiler
- 2 - tape/cord
- 3 - slat
- 4 - guide channel
- 5 - steel hanger
- 6 - joint hanger
- 7 - B545 - box side 45° cover
- 8 - internal plate for box side cover
- 9 - KNO - winding wheel with tube connector
- 10 - LO28 - bearing
- 11 - diameter extension ring
- 12 - SW - octagonal tube
- 13 - OBS - tube adapter
- 14 - guiding wheel with spring
- 15 - slat slider for guide channel
- 16 - end slat
- 17 - end slat stopper
- 18 - SP 90 PZ - top part of the box
- 19 - SK/G - bottom part of the box
- 20 - Plaster carrier
- 21 - SPS 90 - plaster support for flush-mounted box
- 22 - PS 90 PR - box inspection cover

max shutter height including box

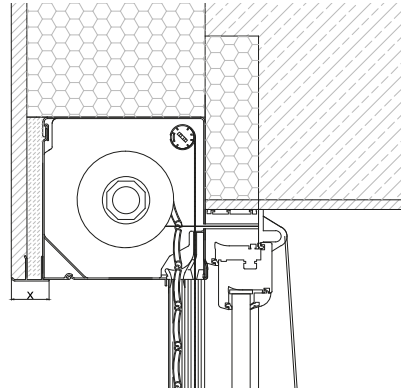
box height	PT37		
	SW40+PZ/45	SW 50+PZ/56	SW 60+PZ/68
137 mm			
SP/SP-E	1710	1410	1630
150 mm			
SP-E	2120	1750	2010
165 mm			
SP/SP-E	2720	2460	2130
180 mm			
SP/SP-E	3170	3100	2950
205 mm			
SP/SP-E	4290	4330	3920

box height	PA52		PA55	
	SW60+PZ/68	SW70+PZ/78	SW60+PZ/68	SW70+PZ/78
165 mm				
SP/SP-E	1380	-	-	-
180mm				
SP/SP-E	1800	-	1510	-
205 mm				
SP/SP-E	2330	-	2020	-

FLUSH MOUNTED SYSTEMS + MKT

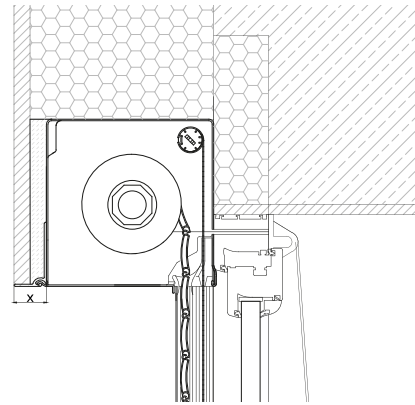


SP + MKT SYSTEM



X
30mm

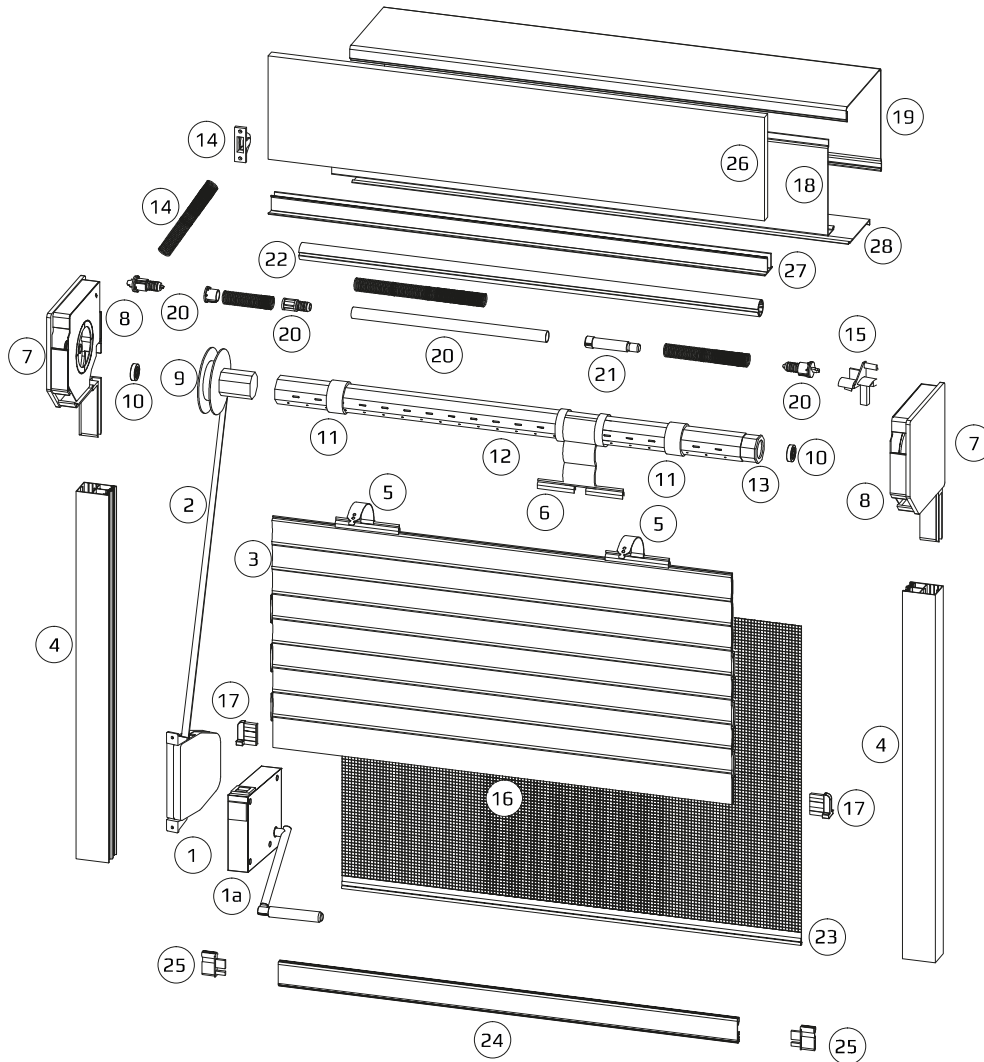
SP-E + MKT SYSTEM



X
15mm | 30mm | 45mm | 105mm

max shutter height including box + MKT

box height	PA39 + MKT			PA40 + MKT			PA43 + MKT		
	SW40+PZ/45	SW 50+PZ/56	SW 60+PZ/68	SW40+PZ/45	SW50+PA/56	SW60+PZ/68	SW40+PZ/45	SW50+PA/56	SW60+PZ/68
150 mm									
SP-E	1330	1180	940	-	890	640	1030	1070	640
165 mm									
SP/SP-E	1690	1600	1650	1000	1250	1050	1600	1460	1330
180 mm									
SP/SP-E	2240	2325	1850	1420	1700	1500	2460	2240	2120
205 mm									
SP/SP-E	2500	2500	2500	2360	2500	2470	2500	2500	2500



- 1 - coiler
- 1A - crank coiler
- 2 - tape/cord
- 3 - slat
- 4 - guide channel
- 5 - steel hanger
- 6 - joint hanger
- 7 - BS45 - box side 45° cover
- 8 - internal plate for box side cover
- 9 - KNO - winding wheel with tube connector
- 10 - LO28 - bearing
- 11 - PZ diameter extension ring
- 12 - SW - octagonal tube
- 13 - OBS - tube adapter
- 14 - guiding wheel with spring
- 15 - slat slider for guide channel
- 16 - end slat
- 17 - end slat stopper
- 18 - SP 90 PZ - top part of the box
- 19 - SK/G - bottom part of the box
- 20 - 25 - MOSKITO system components
- 26 - Plaster carrier
- 27 - SPS 90 - plaster support for flush-mounted box
- 28 - PS 90 PR - box inspection cover

max shutter height including box + MKT

box height	PT37 + MKT		
	SW40+PZ/45	SW 50+PZ/56	SW 60+PZ/68
150 mm			
SP-E	1270	1200	940
165 mm			
SP/SP-E	1680	1690	1600
180 mm			
SP-E	2500	2500	2250
205 mm			
SP/SP-E	2500	2500	2500